



# Janani Tours And Resorts Pvt Ltd.

Corporate Transportation Solution Partner



# Janani

“Mother”

Providing 360° employee transportation solutions.

Serving Major Corporates in Bangalore



Established by **Chairman & MD Mr. Jagadish Kotian** on 14th February **1996**, his mother's birthday.

Focused on delivering customer delight through **Partnership, Process Quality, Flexibility and Transparency.**

Gained an excellent reputation with leading **Fortune 60+ companies** over the last two decades.



# Our Services

## Employee Transport Operations

Organizing fleet and managing operations.

## Integrated Transport Operations

End-to-end management and operations of company's transport requirements, staff, fleet management within allocated budget.



# Our Fleet

(Fully GPS-enabled)

## Buses

### Multiple Bus Options

50/35/22/18 Seats

AC/Non-AC

Fixed and Push back seats with LED/DVD/Music Player

### Luxury Fleet

- BMW (3, 5 and 7 Series)
- Audi (A3, A6 and A7)
- Toyota Camry
- Toyota Corolla
- Mercedes Benz ( S and E Class)
- Jaguar
- ISUZU
- Rolls Royce Ghost

### Comfort Transportation Fleet

- AC/Non-AC Indica
- Swift Dzire
- Toyota Etios
- Maruti Ciaz
- Mahindra Xylo
- Toyota Innova
- Toyota Innova Crysta



# Serving over **40+ Clients**



# Pioneer in Innovations



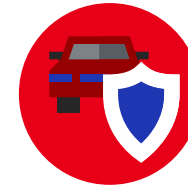
Driver-owner initiative enabling drivers to be owners through Janani backed financing options since 1998.



State-of-the-art command center with 24/7 monitoring since 2007.



Employee confidentiality ensured through call masking feature.



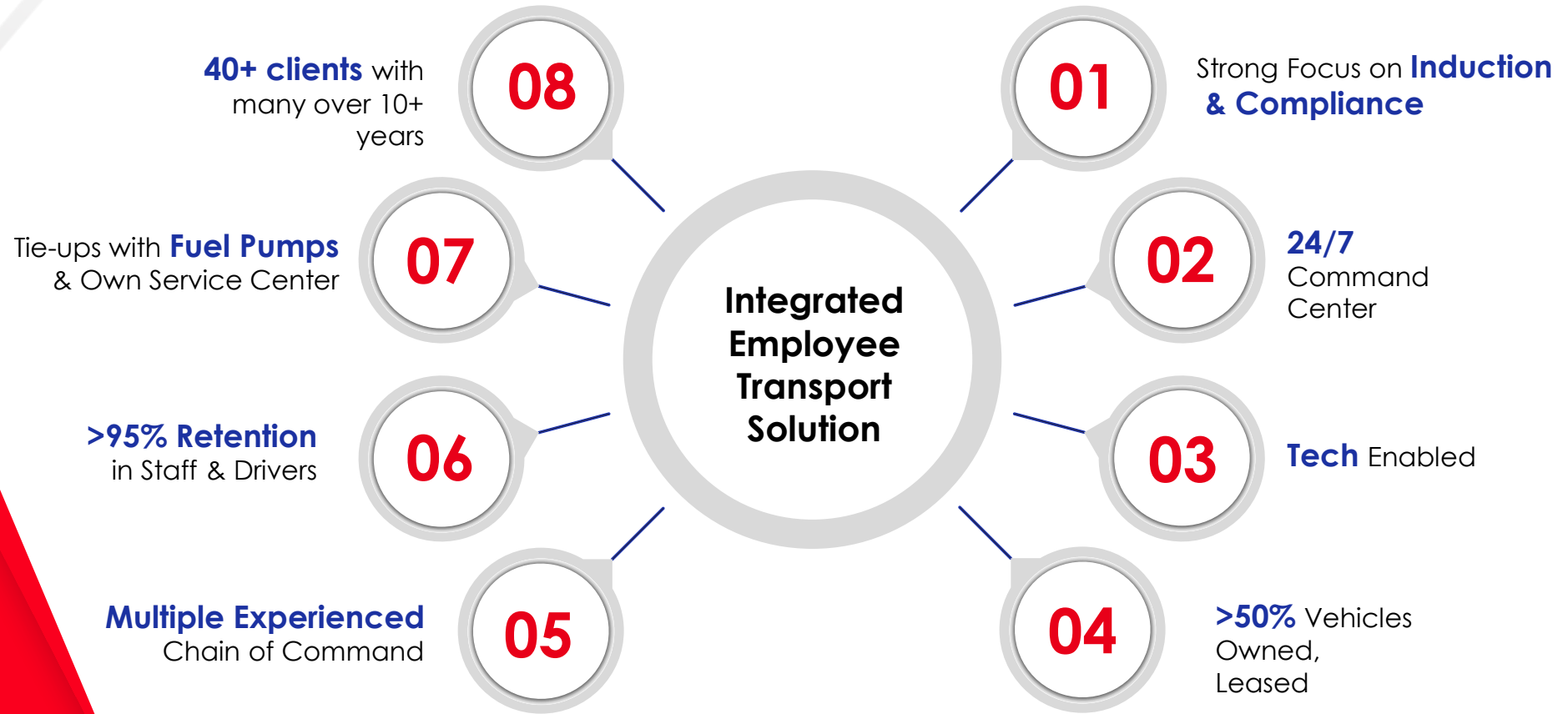
Patrol vehicles for quick assistance & safety.



Early adopter of mobile apps for employee, driver and supervisors.



# Why Janani



# Milestones

## Janani over the Years

**Incorporated**

**1996**

5 Employees

25 Vehicles

5 clients

**Pvt Ltd in 2000**

**2005**

50 Employees

800 Vehicles

25 clients

**Own Premises  
24\*7 Centre  
Cashless Ops**

**2010**

150 Employees

1200+ Vehicles

30+ clients

**Award Winning  
Services.  
Tech Initiatives in  
Transport**

**2015**

300+ Employees

2000+ Vehicles

35+ Clients

**Tech-Driven, Fully  
Automated,  
Mobile App  
leveraged  
Services**

**2018**

Conference on Wheels

450+ Employees

2800+ Vehicles

40+ Clients

**Successfully  
Celebrating 25th  
Years Of  
Anniversary**

**2020**

450+ Employees

3200+ Vehicles

45+ Clients



**2023**

550+ Employees

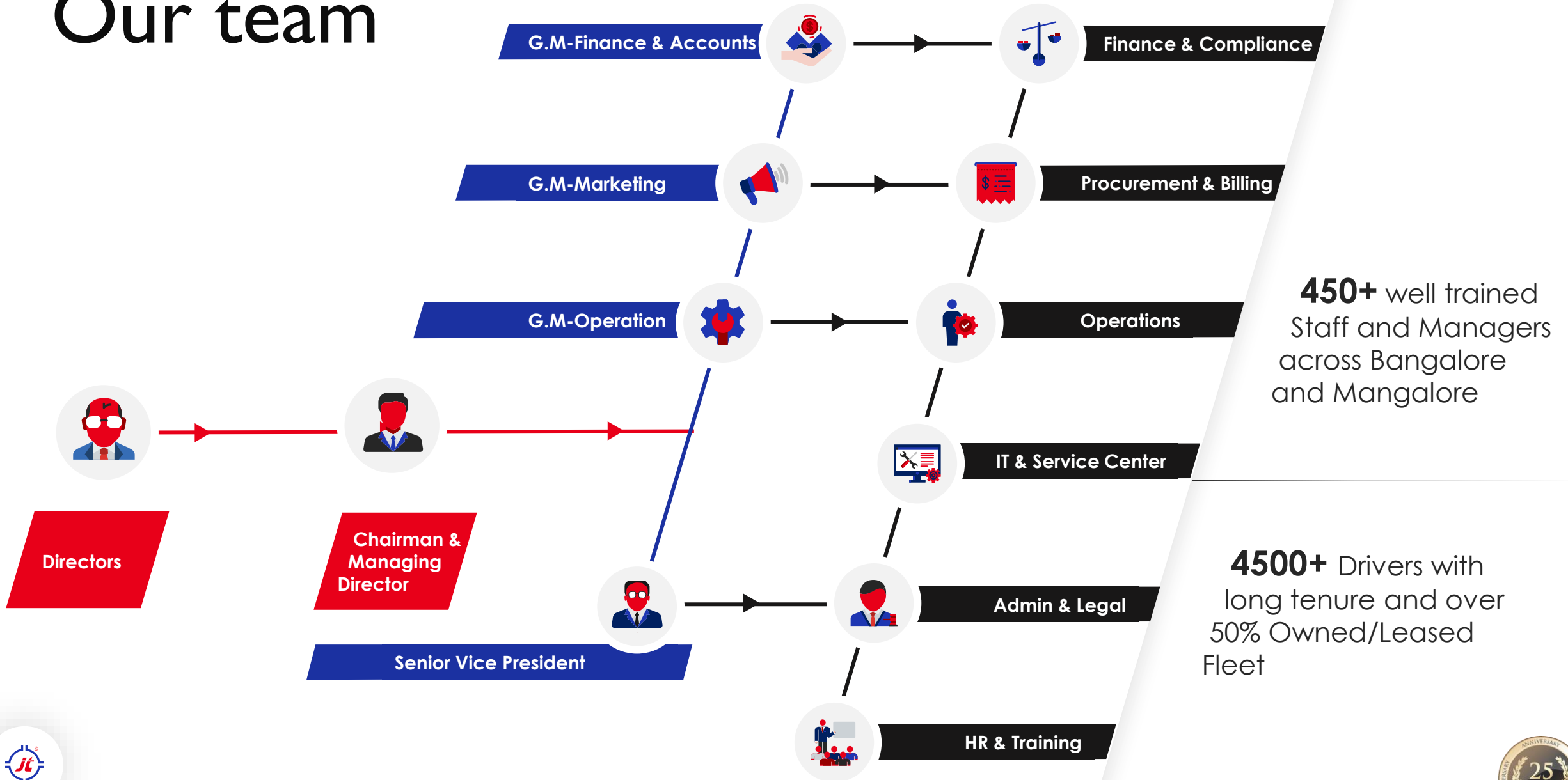
3000+ Vehicles

50+ Clients





# Our team



**450+** well trained Staff and Managers across Bangalore and Mangalore

**4500+** Drivers with long tenure and over 50% Owned/Leased Fleet





# Vision

To be a leader in end-to-end transport solutions by meeting the corporate needs and constantly adapting to their Changing requirements.

# Mission

To be the most preferred corporate employee transport solution provider in India by 2024, with best in class People, Process and Technology.



# Giving Back

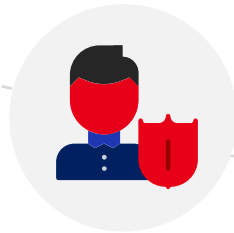
## Prema Charitable Trust



### Education

Funding & Support for Food, Uniforms, Books, Stationery for a number of schools

100% Financial Assistance provided for more than 350+ talented poor students to pursue UG, PG, Engineering and Medical education

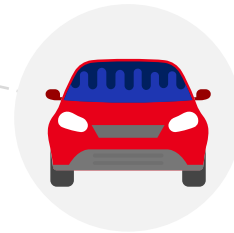


### Drivers & Staff Welfare

Medical expenses assistance for staff, drivers and their families beyond statutory and insurance

Marriage expenses assistance provided for staff & drivers female relatives & their immediate family members

Meals for office staff, janitors and other temporary workers



### Vehicle Support

Transportation vehicle support given to patients & physically challenged children

Transportation support to school trips for deserving schools

Free transport to corporates for their Corporate Social Responsibility Initiatives



### Donations - Health

Active voluntary participation by staff and drivers in blood donation camps

Donations to the needy for surgeries, cardiac operations



# Client

## Expectations

1

### Company

- Employee productivity
- Fully automated operations
- Reduce carbon footprint
- BCP management
- End-to-end transport operation
- Employee satisfaction
- Governance

2

### Finance

- Cost-effective operation
- Business wise invoicing
- Adherence to corporate governance in billing and accounting
- Transparency
- Integrated data management
- Rate card, based on business dynamics

3

### Operations

- Quality of vehicles and drivers
- Handling of employee's w/o escalations/complaints
- Ability to handle exceptions
- Ability and Flexibility to ramp up capacity, locations, vehicle types as per need
- Accident & incident management

4

### Employee

- Ease of tracking
- Good vehicle condition
- Hygiene standards
- Travel time
- Flexibility
- Safety & security

5

### Compliance

- Driver compliance
- Vehicle compliance
- Centralized monitory system
- Dedicated team for vehicle & driver induction
- Background & police verification
- Antecedent checks
- Vintage vehicles tracking
- Vehicle & driver compliance check
- Adherence to regulatory requireme



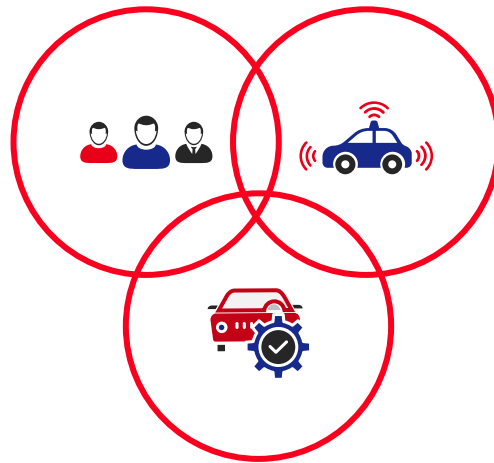
# Our Solution

## Perfection

Janani Ensures Safe And Secured Services Through Its Focus On People ,Process & Technology

### People

- Retention rate of **More than 95%** with several hundred drivers over 5 to 10 years of service
- Pioneer in concept of driver owners improving loyalty and vehicle condition
- Dedicated Team for Driver Induction and background verification
- Well trained & experienced team



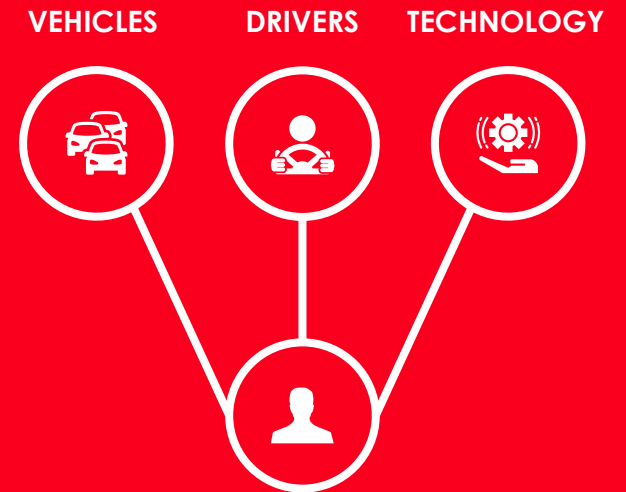
### Technology

- Integrated **24X7 command centre** with live tracking of vehicle through GPS
- Driver, employee app integrated to command centre solution
- Monitor vehicle idle, route deviation, abnormal halt times monitored

### Process

- Well designed and tested process over two decades
- Strong exception handling process and experience
- Fuel pump tie up & fuel tanker back up for strikes/bandhs
- Own Service Center

## END TO END OWNERSHIP OF



HAPPY CUSTOMER

THE JANANI WAY



# Other Services

## Janani Homes

Part of Janani group, it offers perfect service apartments suited both for long term and short term stay. It offers both luxury and convenience.





## Certificate of Appreciation



### Government of India Ministry of Finance

**CERTIFICATE  
OF APPRECIATION**

The Central Board of Indirect Taxes and Customs conveys its appreciation to M/s **JANANI TOURS AND RESORTS PVT LTD** having GST registration number **29AAACJ9953G1Z5** for their prompt filing of returns and payment of Goods and Services Tax upto the year ending 31<sup>st</sup> March 2021, thereby substantially contributing to building a strong and resilient nation.

**M. Ajit Kumar**  
Chairman (CBIC)





# THANK YOU

## **Bangalore Office**

L-170, 171, 'Janani', 6th sector, Ring Road  
HSR Layout, Bangalore – 560 102  
Ph: +91 080 40708090 (100 lines),

## **Mangalore Office:**

No.4-147/30, 'Janani', Prema Layout,  
Kottara Chowki, Mangalore – 575006  
Ph: +91 824 2458413/14



Email: [Info@jananitours.com](mailto:Info@jananitours.com)



[www.jananitours.com](http://www.jananitours.com)



+918040708090

